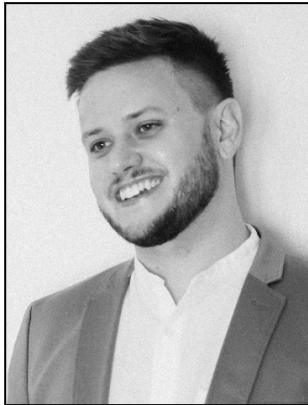


Tyler Nuckols | Social-Ecological Scientist & Ph.D. Candidate

✉ tylernuckols@gmail.com

🌐 <https://www.tnuckols.com/>

📍 Bangkok, Thailand



Tyler Nuckols is a conservation social scientist who studies what happens to farming communities when wildlife protection succeeds. His research in Thailand examines how families living alongside elephants experience the costs and benefits of conservation differently, and what fairness would actually require. He has spent nearly a decade working with rural communities across Southeast Asia and North America, listening to how people navigate life alongside wildlife and asking whose voices shape the decisions that affect them. Tyler teaches courses on environmental justice in conservation at the Center for Wildlife Studies and the University of Colorado Boulder.

EDUCATION

The University of Colorado - Boulder, CO, USA

Ph.D. in Environmental Studies

Dissertation: "The Elephant's Footprint: Environmental Justice, Resilience, and Vulnerability in Human-Wildlife Conflict"

Colorado State University - Fort Collins, CO, USA

M.S. in Global Conservation Leadership

Thesis: "A Systematic Review of Representation, Resources, and Recognition in Global Human-Wildlife Conflicts"

Texas A&M University - College Station, TX, USA

B.S. in Recreation, Park, and Tourism Sciences

Concentration: Community Engagement & Natural Resource Management

KEY SKILLS & COMPETENCIES

Monitoring, Evaluation, & Learning (MEL)

- 1. Strategic Framework Development:** Designed theories of change, logical frameworks, and MEL systems grounded in scientific methods, local knowledge, and the Open Standards for the Practice of Conservation.
- 2. Institutional Standards & Systems:** Familiar with IUCN's Monitoring and Evaluation Policy, Environmental and Social Management System (ESMS), and Project Guidelines and Standards (PGS); skilled in aligning MEL activities with institutional workflows and reporting cycles.
- 3. Participatory & Equity-Focused Evaluation:** Led baseline, midline, and endline assessments using qualitative and quantitative tools; integrated environmental justice frameworks to assess equity, access, and impact in community-based conservation programs.
- 4. Evaluation Design & Management:** Developed terms of reference (ToRs) for project evaluations, coordinated external review processes, and facilitated management responses to ensure accountability and learning.
- 5. Adaptive Learning Systems:** Built MEL frameworks that support evidence-based decision-making and real-time learning in complex, multi-partner conservation and climate adaptation programs.

Research & Data Analysis

- 1. Social-Ecological Field Research:** Extensive experience conducting ethnographic research, participatory rural appraisal, stakeholder interviews, and household surveys in Southeast Asia, focusing on human-wildlife conflict, climate resilience, and smallholder livelihoods.
- 2. GIS & Spatial Analysis:** Proficient in QGIS and Google Earth Engine for mapping, spatial analysis, and visualization of conservation and land-use data.
- 3. Wildlife Monitoring & Integration of Local Knowledge:** Designed and implemented camera trap monitoring systems and ecological surveys; integrated local ecological knowledge into coexistence strategies.

Program & Portfolio Management

- 1. Performance Frameworks & Portfolio Oversight:** Contributed to developing and implementing regional performance frameworks, tracking indicators across multiple projects to inform strategic planning and resource allocation.
- 2. Team & Operations Leadership:** Supervised cross-functional teams, including researchers, field staff, and NGO partners, fostering collaboration, quality assurance, and adaptive implementation.
- 3. Budgeting & Donor Compliance:** Managed multi-year project budgets (USD 150,000–\$300,000), ensuring cost-effective MEL integration, donor alignment, and timely financial reporting.
- 4. Proposal & Report Writing:** Secured competitive funding from donors such as USFWS AECF through well-researched proposals and impact-driven reporting.
- 5. Donor Engagement & Strategic Communication:** Produced detailed reports, learning summaries, and performance dashboards to maintain donor trust and communicate results to key stakeholders.

Capacity Building & Knowledge Sharing

- 1. Training & Facilitation:** Designed and facilitated trainings, participatory evaluation workshops, and team onboarding programs to build local and organizational capacity.
- 2. Institutional Learning & Knowledge Exchange:** Supported organizational learning by integrating MEL insights into program design and facilitating cross-partner exchanges on results, risks, and best practices.
- 3. MEL Platforms & Data Systems:** Skilled in NVivo, Smartsheets, and Google Workspace for project tracking, data collection, and portfolio management.
- 4. Creative Communication:** Proficient in Adobe Creative Suite (Illustrator, InDesign, Premiere Pro, Photoshop) for visual storytelling and digital knowledge products.

PUBLICATIONS

1. Nuckols, T., Pisanwanich, A., Owen, A., van de Water, A., English, M., de Silva, S., & Bailey, K. (2025). Integrating local ecological knowledge with camera trapping to study elephant crop-foraging in Kuiburi, Thailand. *Manuscript under review, Conservation Science and Practice*.
2. Walker, S., Bennett, N., Smith, E., Nuckols, T., Narayana, A., Lee, J., & Bailey, K. (2023). Unintended consequences of nature-based solutions: Social equity and flood buyouts. <https://doi.org/10.1371/journal.pclm.0000328>
3. Walker, S., Smith, E., Bennett, N., Bannister, E., Narayana, A., Nuckols, T., Velez, K., Wrigley, J., & Bailey, K. (2023). Defining and conceptualizing justice and equity in climate adaptation. <https://doi.org/10.1016/j.gloenvcha.2024.102885>
4. Nuckols, T. (2020, May 6). *Plans to prevent future pandemics must consider gender issues, too*. Mongabay.

PROFESSIONAL EXPERIENCE

Consultant, Agronomist, and Social Safeguarding

Zoological Society of London (ZSL), Thailand | 2025–Present

- Developed and refined the integrated agroforestry workplan for a Darwin Initiative-funded human-elephant coexistence project in the sWEFCOM landscape, consolidating NbS activities across 17 communities and establishing KPIs aligned with donor reporting requirements.
- Led implementation of ZSL's FAIRER-GEDSI framework, including vulnerability mapping, benefit-sharing mechanism design, grievance procedures, and elite capture prevention measures for a 369-farmer baseline population across Karen, Mon, and Thai communities.
- Conducted critical review of results chains and stepwise engagement plans, identifying resource-activity misalignments and recommending adaptive strategies within constrained budgets to protect communities from partially implemented interventions.
- Supported fundraising and proposal development for blended finance instruments, carbon credit integration under Plan Vivo, and family office investment, translating technical feasibility assessments into investor-ready materials.
- Provided technical oversight for monitoring, evaluation, and learning systems, including disaggregated indicator development for gender equity, indigenous inclusion, and household wellbeing outcomes measured through the Abbreviated Women's Empowerment in Agriculture Index.

Research and Programs Manager

Bring the Elephant Home, Thailand | 2022–Present

- Co-developed theories of change, results frameworks, and participatory monitoring systems with local communities to track biodiversity restoration, communal resilience, and elephant damage mitigation.
- Directed baseline assessments, ongoing performance monitoring, and adaptive evaluations for projects focused on crop diversification, sustainable livelihoods, and elephant behavior, ensuring alignment with donor standards and participatory approaches.
- Provided technical oversight and delivered inclusive training programs rooted in Participatory Action Research, the Open Standards for the Practice of Conservation, and IUCN guidelines on human-wildlife conflict mitigation, building the capacity of field teams and local stakeholders.
- Integrated environmental justice frameworks drawn from published research to evaluate equity, well-being, and conservation impact throughout the project lifecycle.
- Managed donor compliance by overseeing budgets, producing quarterly performance reports, developing evaluation terms of reference (ToRs), and coordinating external reviews.
- Coordinated and managed cross-sector teams, including NGO staff, community members, academic partners, and government officials, to align project outcomes with local priorities, national policy goals, and global conservation and coexistence strategies.

Lecturer and Instructor

The University of Colorado, USA | 2021–Present

- Designed and taught two upper-division undergraduate courses: Foundations of Environmental Justice (ENVS 3034) and Human-Wildlife Interactions (ENVS 3100), focusing on systemic inequities, race and gender in environmental contexts, and socio-ecological dimensions of human-wildlife coexistence.
- Developed complete online curricula using Canvas, incorporating multimedia resources, discussion forums, and case-based learning to enhance student engagement.
- Utilized digital learning platforms (Canvas, Zoom, collaborative tools) to foster inclusive learning environments and build capacity in remote and multicultural settings.
- Created original assessments, facilitated synchronous and asynchronous learning, and provided individualized feedback as the sole instructor of record.
- Adapted teaching strategies based on student evaluations and current online and inclusive pedagogy best practices.

Researcher – Climate Adaptation, Equity & Evaluation

The Nature Conservancy, USA | 2022–2023

- Conducted qualitative research on the equity and justice dimensions of climate adaptation policies in New York State's coastal and riverine areas, focusing on flood buyouts and sea-level rise mitigation strategies.
- Co-authored two academic manuscripts exploring the unintended consequences of nature-based solutions and proposing frameworks to integrate justice into climate adaptation planning.
- Co-developed a transferable toolkit to evaluate climate adaptation and mitigation programs through an environmental justice lens, identifying equity outcomes across race, class, governance, and procedural inclusion.
- Translated and adapted this toolkit for use in human-elephant conflict (HEC) contexts as part of Ph.D. research, applying equity-centered MEL strategies to evaluate coexistence programs and inform more just, community-led conservation practices.
- Supported strategic outreach and science communication with policy and NGO audiences to promote uptake of justice-oriented climate resilience and conservation planning approaches.

Social-Ecological Research Lead

HECTAAR Group, Kui Buri, Thailand | 2021–2023

- Led a mixed-methods research initiative at the interface of human-elephant conflict, climate adaptation, and community-based conservation in villages bordering Kuiburi National Park.
- Designed and conducted household surveys and semi-structured interviews to assess smallholder cropping strategies, local adaptation practices, and socio-ecological vulnerability to human-wildlife conflict.
- Collected ecological data through camera trap networks on farmlands adjacent to protected areas, contributing to a deeper understanding of elephant crop-foraging behavior and landscape use.
- Co-developed a Monitoring, Evaluation, and Learning (MEL) and adaptive learning framework for camera trapping programs in collaboration with local NGOs, which continues to guide field-based monitoring efforts in the region.
- Conducted a 2-year embedded ethnographic study to explore lived experiences of human-elephant conflict, resilience, and local conservation efforts, centering community narratives and locally rooted knowledge systems.

Science Communicator & Content Producer

The Wilderness Society, Denver, Colorado, USA | 2020–2021

- Collaborated with program teams to design and execute advocacy campaigns focused on climate resilience and public lands, integrating science-based messaging with community mobilization.
- Created targeted outreach materials (e.g., fact sheets, graphics, pledge forms, digital action tools) and maintained a centralized activist database to support monitoring engagement metrics.
- Led SMS-based digital organizing via Hustle, providing strategic input to energy and climate policy teams on data-driven campaign evaluation and stakeholder communications.
- Contributed to adaptive campaign planning through audience analytics and iterative content development practices aligned with institutional learning and impact tracking frameworks.

Project Manager, Global Mapping & Strategic Outreach (GMSO)

Office of the Vice President for Research, Colorado State University | 2019–2021

- Directed project operations and annual work planning for a system-wide initiative highlighting CSU's global research footprint and strategic partnerships.
- Produced geospatial data visualizations and story maps with the Geospatial Centroid to support institutional knowledge sharing and outreach.
- Oversaw internal coordination across four core themes (Communications, Technology, Geospatial Systems, and Strategic Outreach), ensuring quality control, timely delivery, and budget adherence.
- Contributed to cross-departmental capacity building in international engagement tracking, aligning project workflows with strategic performance indicators and long-term institutional goals.

Digital Communications Coordinator

Conservation Colorado, Denver, USA | 2018–2019

- Led the organization's digital strategy to amplify environmental advocacy efforts, manage stakeholder communications, and mobilize public action on key conservation and policy issues.
- Oversaw web and social media strategy to enhance engagement and donor outreach, integrating real-time analytics and visual storytelling to track impact and reach.
- Directed the redesign of the organization's website and microsites for issue-specific campaigns, ensuring accessibility, brand consistency, and message alignment.
- Produced a wide range of communications materials, including annual reports, digital ads, ArcGIS story maps, and event collateral supporting institutional transparency and public accountability.

Ecotourism & Livelihoods Officer

Elephant Valley Project, Cambodia | 2016–2018

- Managed operations, budgeting, staffing, and external communications for a leading responsible tourism center embedded within a conservation and elephant sanctuary landscape.
- Collaborated with local communities to develop alternative livelihood initiatives linked to conservation goals, supporting inclusive economic development and reducing human-elephant conflict.
- Oversaw visitor management, education programs, and impact storytelling to ensure ethical tourism practices and build international support for conservation efforts.
- Supported research activities on elephant behavior, biodiversity monitoring, and community-based conservation management, contributing to long-term ecosystem stewardship.

PRESENTATIONS & INVITED TALKS

1. Nuckols, T. (2025, July). What is "fair" in human-elephant conflict? Understanding local community experiences, monitoring mitigation, and finding solutions through environmental justice. Oral presentation accepted at the International Congress for Conservation Biology (ICCB), Brisbane, Australia.
2. Nuckols, T. (2024, November). Just Coexistence? Navigating human-elephant interactions in Kuiburi, Thailand, through environmental justice. Society for Conservation Biology Social Science Working Group Conference, Virtual.
3. Nuckols, T., Bailey, K., Pisanwanich, A., Van de Water, A., & Owen, A. (2024, October). Human-elephant coexistence: Environmental justice in Kuiburi, Thailand. Pathways Europe 2024: Human Dimensions of Wildlife Conference & Training Program, Córdoba, Spain.
4. Nuckols, T. (2023, November). Systems of change: Human-elephant experiences in dynamic agroecosystems. 19th International Elephant Conservation & Research Symposium, Chiang Mai, Thailand.

TECHNICAL SKILLS & COMPETENCIES

Research & Data Analysis

- Monitoring and Data Analysis: Quantitative and qualitative research; baseline, midline, end-line studies.
- Capacity Building and Training: Designing and facilitating workshops for staff and partners.
- Stakeholder Engagement: Community-based approaches, participatory research, inclusive learning.
- Spatial Analysis & GIS: Skilled in ArcGIS and Google Earth Engine for mapping and spatial data analysis.
- LM&E Strategy and Frameworks: Theories of Change, Outcome Mapping, Logic Models, Open Standards

Project Management & Leadership

- Team Oversight & Coordination: Experienced in supervising cross-functional teams, field staff, and research assistants.
- Budgeting & Finance: Capable of managing project funds, grant budgets, and financial reporting.

- Stakeholder & Community Engagement: Effective at relationship-building, conflict resolution, and participatory research methods.

Grant & Proposal Experience

- Developed multiple grant proposals for conservation and livelihood diversification initiatives funded by USFWS AECF and private foundations.
- Secured repeat funding by crafting compelling narratives and aligning with donor requirements and organizational priorities.

Budget Development

- Created and managed budgets for multi-year, multi-stakeholder conservation projects in Southeast Asia, including large-scale USFWS-funded initiatives.
- Collaborated closely with finance and technical teams to ensure cost proposals were donor-compliant, transparent, and supportive of project objectives.

Donor Engagement & Relationship Building

- Cultivated relationships with public, private, and philanthropic donors, leading to sustained funding for elephant conservation and community livelihoods.
- Provided regular progress updates and financial reports, highlighting project impacts and cost-effectiveness to maintain donor trust and satisfaction.

Partnership Development

- Formed cross-sector partnerships with NGOs, government agencies, and private-sector entities to expand program reach and resources.
- Coordinated joint initiatives and managed stakeholder expectations, resulting in more diverse funding streams and shared accountability.

Creative & Design

- Adobe Creative Suite: Proficiency in Illustrator, InDesign, Premiere Pro, Photoshop, and Lightroom for graphic design, video, and photography.
- Media Production: Skilled in print layout, video editing, and digital storytelling to support outreach and education.

Language Proficiency

- English: Native fluency
- Spanish & Thai: Basic proficiency in conversational use

Office & Productivity

- Microsoft Office Suite: Advanced skills in Excel, PowerPoint, Word, Outlook, and Publisher

CERTIFICATIONS

1. Teaching Excellence Program (2023)

University of Colorado

Focus on advanced instructional strategies, curriculum development, and student engagement.

2. Certificate in College Teaching (2023)

Center for Teaching & Learning, University of Colorado Boulder

Emphasizes inclusive pedagogy, course design, and best practices for higher education instruction.

3. Conflict Management in Practice (2021)

Colorado State University

Covers negotiation, mediation, and stakeholder engagement strategies in diverse professional contexts.

4. Open Standards for the Practice of Conservation (2021)

The Nature Conservancy

Focuses on planning, monitoring, and adaptive management frameworks for conservation initiatives.

5. Professional Event Management & Facilitation (2014)

Texas A&M University

Training in event coordination, group facilitation, and logistical planning for diverse audiences.

OUTREACH & SERVICE

Undergraduate Advising & Mentorship

1. Jennalie Burroughs, Environmental Studies Undergraduate, StudioLab Undergraduate RA Program (2025)
2. Evan Yakely, Environmental Studies Undergraduate, StudioLab Undergraduate RA Program (2025)
3. Jumad Wais, Environmental Studies Undergraduate, Internship Program (2025)
4. Karla Pineda Velez, Environmental Studies Undergraduate, CU Boulder UROP Program (2024)
5. Marieke Boogaard, Animal Management Undergraduate, Internship Program (2024)

Academic Committees

1. ENVS Undergraduate Curriculum Committee, University of Colorado (2021–2022)
 - Served as Graduate Representative, contributing to curriculum development and student success initiatives.
2. ENVS JEDI Action Group, University of Colorado (2021–2022)
 - Inclusive Curriculum & Pedagogy Committee Member
 - Program Culture & Climate Committee Member
 - Communication & Collaboration Committee Member
3. CSU Diversity & Inclusion Committee, Colorado State University (2020–2021)

Community Engagement & Volunteer Service

1. Kuiburi National Park Reforestation & Weeding: Volunteer (Fall 2024, Fall 2023)
2. School for Field Studies SE Asia Program: Volunteer Instructor (Summer 2024)
3. National Thai Elephant Day: Speaker & Volunteer (Spring 2024, Spring 2023)
4. College of Arts & Sciences Graduate Mentor Program (Fall 2022–Spring 2023)
5. "Exploring Careers in Environmental Studies" Panel: Speaker (Fall 2022)

AWARDS, GRANTS, & HONORS

1. Beverly Sears Graduate Research Award, The University of Colorado (2025)
2. CU Boulder StudioLab Undergraduate Research Assistant Funding (2024)
3. CARTSS Graduate Student Research Award, The University of Colorado (2023)
4. Department Nomination, The Cogswell Award for Inspirational Instruction (2023)
5. Society for Conservation Biology Graduate Student Research Award (2023)
6. Excellence in Teaching Award, University of Colorado (2023)
7. Best Should Teach Award, University of Colorado (2023)
8. Cynthia H. Schultz Research Award (2021)
9. Graduate Student Research Grant, The University of Colorado (2021)
10. USFWS AECF, United States Fish & Wildlife Service (2021)
11. Tools for Conservation Grant, IDEAwild USA (2021)
12. Oscar and Isabel Anderson Graduate Fellowship, Colorado State University (2020)

AFFILIATIONS & PROFESSIONAL MEMBERSHIPS

1. The Explorers Club - Member
2. Ecological Society of America - Member
3. Institute of Behavioral Science, University of Colorado - Member
4. Sustainability and Innovation Lab, University of Colorado - Member
5. Animal Behavior Society - Member
6. Society for Conservation Biology - Social Science Working Group / DEIJ Committee
7. Human-Elephant Conflict Social-Ecology Working Group (HECTAAR) - Co-Founder
8. National Research Council of Thailand - Registered Foreign Researcher

RESEARCH SUMMARIES

The University of Colorado - Boulder, CO, USA

Ph.D. in Environmental Studies – Principal Investigator

Investigating the socio-ecological dynamics of human-elephant conflict near Kuiburi National Park through a critical environmental and ecological justice lens. Drawing on structural intersectionality and the Capabilities Approach, I examine how power disparities influence vulnerability and resilience to elephant crop raids. I model perceptions of justice, collective action, and adaptive capacities by employing a mixed-methods approach (comprising surveys, ethnographies, in-depth interviews, and embedded ethnographic fieldwork). Key research milestones include a year-long camera-trapping study with 40 cellular-enabled traps (January–December 2023), a planned 300-household vulnerability survey (November–December 2024), participatory scenario planning (August 2024), and a thematic intersectional analysis of 40 interviews (April–June 2024). A pilot field season (May–August 2022) established local research networks and informed my integrated approach, which aims to identify pathways for sustainable coexistence and transformative socio-ecological change.

Integrating Community Values into Conservation in Human-Elephant Landscapes

Bring the Elephant Home - Co-author

Led cross-regional, mixed-methods research on conservation values in human-elephant landscapes across South Africa, Namibia, and Thailand (N=702). Developed and applied a novel typology integrating sacred and secular value systems with four conservation models: Protectionist, New, Compassionate, and Convivial Conservation. Conducted regional comparisons using principal component analysis and ANOVA to assess how demographics, livelihoods, and elephant experiences shape conservation preferences. The findings will inform a globally relevant framework for designing more equitable, context-sensitive conservation policies that align with local values, support coexistence, and contribute to methodological innovation through value-weighted scoring systems and participatory policy insight.

Elephant Behavioral Responses to Native Bees and Synthetic Pheromones

Bring the Elephant Home – Principal Investigator

Designed and led a multi-site experimental study assessing the behavioral responses of Asian elephants to native Asian honey bees (*Apis cerana*) and synthetic honeybee alarm pheromones as a sustainable deterrent in Kuiburi, Thailand. The study used motion-activated camera traps and behavioral coding protocols to monitor elephant reactions across three treatment types. Findings contribute to novel HEC mitigation strategies grounded in local ecological knowledge and offer early insights into the viability of bee-based deterrents. Regional conservation partners now use a beehive fence MEL framework developed for this study. The research also incorporated local stakeholder engagement, participatory site selection, and community workshops to foster ownership, support honey production, and promote coexistence.

Equity and Environmental Justice in Climate Adaptation Policy

University of Colorado Boulder & The Nature Conservancy – Co-Investigator/Collaborator

Conducted qualitative research on the equity implications of sea-level rise adaptation strategies in coastal and riverine communities in New York State. Responsibilities included designing and conducting stakeholder interviews, thematic coding and analysis, and contributing to two academic publications. The project identified the unintended social consequences of climate adaptation programs, such as flood buyouts and managed retreat, and proposed a justice-centered evaluation framework. Outcomes included the development of a

transferable toolkit to assess equity and procedural fairness in adaptation planning, which has since been adapted for human-wildlife conflict contexts through doctoral research.

Assessing Elephant Rewilding Feasibility, Suitability, and Readiness

Bring the Elephant Home & Wildlife Alliance – Co-Investigator/Collaborator

This study developed and tested a multidimensional framework to assess the feasibility of reintroducing captive Asian elephants to the wild in Thailand. The research integrated behavioral assessments of captive elephants, habitat suitability modeling, and extensive interviews with mahouts and elephant owners from Indigenous communities and sanctuaries. A scoring system based on behavioral similarity to wild elephants was piloted across 16 individuals. Socioeconomic and cultural data from 30 in-depth interviews and 208 household surveys informed a comparative analysis of rewilding scenarios balancing elephant welfare, ecological integrity, and human livelihoods. Findings highlight the critical roles of ownership models, local environmental knowledge, and bonded cow-calf groups in shaping the success of rewilding efforts. The resulting toolkit offers a replicable, community-engaged approach to ethically and ecologically responsible elephant rewilding.

Facilitating Human-Elephant Coexistence through Regenerative Agroecology

NSF DISES Project – Co-Investigator/Collaborator

This interdisciplinary, multi-country study investigates how agroecological systems can transition from conflict-prone to coexistence-focused regimes by understanding and shifting human and elephant behavior. The project spans four Asian countries and examines the social-ecological dynamics of human-elephant conflict (HEC) using a mixed-methods approach, including quantitative surveys, ecological monitoring, behavioral assessments, and agent-based modeling. My role included developing indicators of community tolerance, designing experimental cropping interventions, and supporting participatory research with farming communities. The project investigates whether regenerative, elephant-resilient cropping systems enhance ecological health, shift community attitudes, and promote biodiversity. Outcomes will include a predictive model for resilience in agroecosystems and a generalizable framework for applying coexistence strategies across human-wildlife conflict contexts.

Colorado State University – Fort Collins, CO, USA

M.S. in Global Conservation Leadership – Principal Investigator

Executed a systematic mapping of global terrestrial agricultural human-wildlife conflicts (HWC), reviewing over 12,000 articles using ROSES standards. Identified geographic and thematic trends, revealing a concentration of HWC research in the global South despite most authors residing in the North and an overemphasis on charismatic species. The findings highlighted research gaps and opportunities for interdisciplinary collaborations to advance sustainable human-wildlife coexistence.

REFERENCES

1. Dr. Khwankhao Sinhaseni | khwankhao@bteh.org
Country Director, Bring the Elephant Home, Thailand
2. Dr. Karen Bailey | Karen.Bailey@colorado.edu
PhD Advisor, The University of Colorado, Boulder
3. Dr. Rachel Crouthers | rachel.crouthers1@gmail.com
Conservation Scientist and Technical Advisor, WWF Cambodia
4. Chris Iverson | civerson@wcs.org
Ecotourism Technical Advisor, WCS Cambodia
5. Akaraphum Pisanwanich | akaraphum@bteh.org
Research Assistant, Bring the Elephant Home, Thailand

